

Solo XT550

OWNERS GUIDE



IMPORTANT: Read before using!

ConvaQuip Ind., Inc.
P.O. Box 3417
Abilene, TX 79604

Toll 800-637-8436
Fax 325-677-7217

CONTENTS

SECTION 1 - Introduction	1
SECTION 2 - Safety.....	2 - 3
SECTION 3 - A First Look At Your Solo XT550	4
SECTION 4 - Assembly Instructions.....	5-6
SECTION 5 - Seat Adjustment.....	6
SECTION 6 - Disassembly of Your Solo XT550 For Transport	7 - 8
SECTION 7 - Operating Controls for Delta Tiller.....	9 - 10
SECTION 8 - Operating Sequence	11
SECTION 9 - Brake Systems	12
SECTION 10 - Batteries.....	13
SECTION 11 - Battery Charging	14 - 15
SECTION 12 - Routine Maintenance	16
SECTION 13 - Troubleshooting	17
SECTION 14 - Specifications	18
SECTION 15 - Electromagnetic Interference	19 - 20
SECTION 16 - California Proposition 65 Warnings	21
SECTION 17 - Warranty	22

INTRODUCTION

SECTION 1

Thank you for choosing the Solo XT550 as your new personal mobility vehicle. Your Solo XT550 has been designed and manufactured in America with a great deal of pride, and has been thoroughly tested prior to shipment. We sincerely hope that your ownership of a Solo XT550 will bring you many years of freedom and enjoyment. To that end we ask that you read and understand this Owners Manual prior to operation, and that you pay particular attention to the safety precautions listed in Section 2, and in various places throughout this manual.

Although maintenance on your Solo XT550 is minimal, it is important that you follow the maintenance instructions listed in Section 12 of this manual.

Please record the Serial Number of your Solo XT550 on this page. This is necessary in the event you need to order repair parts. The serial number is located on a tag under the lifting handle on the rear drive unit. Also be sure to keep your invoice in a safe place. This is necessary in the event you require service under the warranty.

SERIAL NUMBER xxxxxxxxxxxx _____

ENJOY YOUR Solo XT550 AND ABOVE ALL - RIDE SAFELY

SECTION 2

It is the responsibility of the OWNER to read this manual and to know the proper operating precautions and requirements and to make them known to all who may work with the equipment or be in the working area. Unsafe practices may result in serious injury or death and equipment damage!

Failure to read this manual is a misuse of the equipment!

SAFETY ALERT SYMBOL



Watch for this symbol. It means:

**ATTENTION!
BECOME ALERT!
YOUR SAFETY IS INVOLVED!**

The **SAFETY ALERT SYMBOL** is used to identify potential hazards and to call your attention to instructions concerning your personal safety. Read the instructions that accompany this symbol and be aware that to disobey or disregard the message may result in personal injury or death.

PLEASE NOTE:

The words **DANGER**, **WARNING**, and **CAUTION** are used throughout this manual to designate the level of a hazards seriousness.

DANGER: Indicates an imminently hazardous situation which, if not avoided, will result in death or serious injury. This word is limited to the most extreme situations.

WARNING: Indicates potentially hazardous situation which, if not avoided, could result in death or serious injury.

CAUTION: Indicates potentially hazardous situation which, if not avoided, may result in minor or moderate injury. It may also be used to alert against unsafe practices.



GENERAL SAFETY PRECAUTIONS



IMPORTANT: Please be sure you read and understand these Safety Precautions, and observe them at all times.

- ✓ BE SURE to read this Owners Manual before operation.
- ✓ ALWAYS reduce speed and use extreme caution when operating indoors or in crowded areas.
- ✓ DO NOT carry passengers.
- ✓ DO NOT turn the key on until you are properly seated with your feet on the floor.
- ✓ DO NOT operate unless the seat is locked facing forward, and the tiller is locked in position.
- ✓ DO NOT operate on steep downhill slopes. When going downhill, reduce speed. ALWAYS operate straight up or down on a hill. NEVER drive “across the slope” on an incline.
- ✓ DO NOT get off the Solo XT550 until you have turned the key switch off. Remove key when the Solo XT550 is unattended.
- ✓ DO NOT operate on inclines greater than 6°
- ✓ DO NOT make sharp turns while traveling at high speeds or when operating on inclines or uneven surfaces.
- ✓ ALWAYS reduce speed before turning.
- ✓ DO NOT adjust tiller angle while moving.
- ✓ DO NOT use the Solo XT550 as a seat in a motor vehicle. It DOES NOT meet Federal safety standards for vehicle seating.
- ✓ DO NOT operate your Solo XT550 on streets or roads.
- ✓ DO NOT operate the Solo XT550 if the Parking Brake is not operating properly. Refer to Section 8 and to the Maintenance Instructions for details.
- ✓ DO NOT operate when carrying a weight greater than 550 lbs.
- ✓ ALWAYS disconnect the batteries when transporting the Solo XT550.
- ✓ DO NOT disassemble the tire/rim assembly while the tire is pressurized.
- ✓ ALWAYS use extreme caution when operating on sidewalks or uneven surfaces.
- ✓ ALWAYS use extreme caution when operating near or around electromagnetic equipment, i.e. cellular phones, or ham radios. Refer to section 16 for more details.
- ✓ DO NOT allow your scooter to get wet. Always use a cover if your scooter is left outdoors, or transported in an open pickup box, in a trailer, or on a lift which is mounted on the outside of a vehicle.
- ✓ ALWAYS use the lowest comfortable seat position when operating your Solo XT550 to increase its stability.

DO NOT operate the Solo XT550 until you are confident of your ability to do so safely. If you need further instruction, contact your Authorized Dealer.

A FIRST LOOK AT YOUR SOLO XT550

SECTION 3

This section describes the major parts and features of your Solo XT550. Many of the features are described in more detail in other parts of this manual. Refer to the appropriate Sections as listed.



FIGURE 1

1. Accelerator Control Panel: (Section 7).
2. Tilt Release Lever: Tiller angle is adjustable from handlebar without reaching down.
3. Seat Height Adjustment, Front/Back Seat Adjustment: (Section 5).
4. Battery Charger Plug: (Section 11).
5. Headlight. (optional)
6. Rear Drive Unit: Transaxle drive for quieter operation and a rugged 24 volt DC motor.
7. Brake Release Lever: Allows the cart to be pushed (Section 9).
8. Seat Swivel Release: Positive lock, not friction lock.
9. Removable Armrests: Width of Armrests is adjustable for your comfort.
10. Fold-up Armrests: Makes getting on and off Solo XT550 easier.
11. Folding Seat.
12. Taillights (optional)

ASSEMBLY INSTRUCTIONS

SECTION 4

If your Solo XT550 has been assembled prior to delivery to you, please disregard this section. Otherwise, proceed as follows:

1. Open Box No. 1 Containing the Front Frame Section. Open the box packed on the floor and remove the Seat Post assembly.
2. Open Box No. 2 containing the Rear Drive Unit and the Seat.
3. The seat is adjustable in three positions (front to back). Determine which position you want and adjust at this time according to instruction in Section 5.

4. Bolt the Seat Post assembly and Armrest Mount Tube to the seat bottom with six 1/4" bolts, lockwasher, and flatwashers packed in the parts bag (fig 2 & 3). On XT550 seats you must use a "seat plate" between the seat post and the seat (fig 3).

5. Attach the padded Armrests to the curved Armrest Support with 1/4" x 1 3/4" bolts and lock nuts. Two 5/16" nylon washers go between the Armrest and support (fig 2 & 3).

6. Connect Front Frame Section and Rear Drive unit according to the instructions in Section 6.

7. Install the Seat by placing the Seat Post in the Seat Base on the Solo XT550. The seat height is adjustable by

positioning the seat height adjustment tube in one of the holes provided.

ALWAYS USE THE LOWEST POSITION THAT IS COMFORTABLE FOR YOU. See Section 5.

8. Slide the Seat Arms into the Armrest Support and lock them in place with the two black plastic knobs from the parts bag. The Seat Arms are adjustable by loosening the knobs, sliding the Arms in or out, and retightening the knobs.

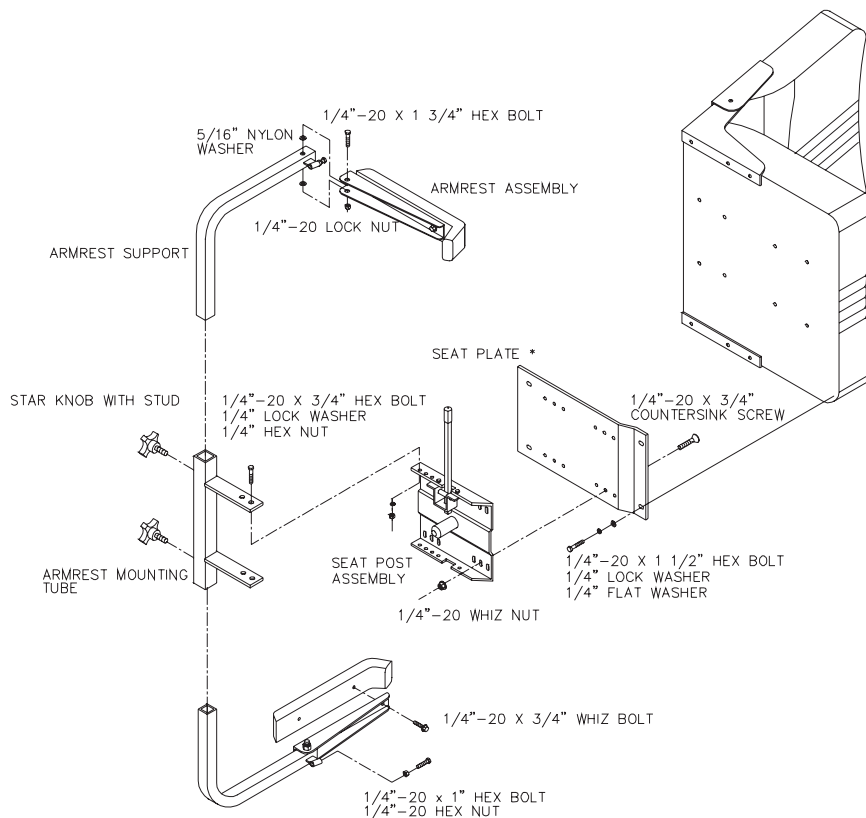


FIGURE 2

⚠ CAUTION ⚠

We recommend that you do not adjust the arms out so far that they are wider than the base of the cart, they may catch on doorways or other objects, causing damage to your Solo XT550 or injury to yourself or others. If it is necessary to do so (such as on the extra large seat) use extra care.

9. Connect the black lead to the negative (-) post of the battery, and the red lead to the positive (+) post of the battery with the bolts and nuts supplied with the batteries. (figure 3).

10. Place the battery in the battery box and place the cover on the battery box. Place the lifting strap around the battery box and fasten it in place snugly. (figure 4).



FIGURE 3



FIGURE 4

SEAT ADJUSTMENT

SECTION 5

The seat on your Solo XT550 is adjustable up and down. In addition, the width of the armrests are adjustable, and they may be removed from the seat if necessary.

SEAT HEIGHT ADJUSTMENT - There are four height positions. **ALWAYS USE THE LOWEST SEAT POSITION THAT IS COMFORTABLE FOR YOU.** To change positions, remove seat, pull the locking pin from the lower seat base, put the height adjustment tube in the desired location, and lock in place with pin.

FRONT TO BACK ADJUSTMENT - There are three positions. To change position, remove the seat plate assembly from the bottom of the seat. Remove the four bolts holding the upper seat post to the seat plate. Bolt the upper seat post back to the seat plate in the set of holes that provides the proper seat location (Fig 2).

ARMREST ADJUSTMENT/REMOVAL - Loosen the black plastic knobs on the bottom of the seat and slide the arms in and out. Tighten knobs when adjusted.

⚠ CAUTION ⚠

Use caution when adjusting the armrest widths. If the arms are wider than the frame of the Solo XT550, they may catch on the side of the doorway or other obstacle, causing damage to the Solo XT550 and possible injury to yourself.

DISASSEMBLY OF YOUR SOLO XT550 FOR TRANSPORT

SECTION 6

One of the most important features of your Solo XT550 is the ease with which it disassembles for transport in a car or van.

STEP 1 - Fold the back down on the seat and remove the seat by lifting straight up.
NOTE: The swivel must be in a locked position (not free swiveling) in order to remove the seat.



Figure 5

STEP 2 - Disconnect both battery cables. Disconnect the motor cable from the Rear Drive Unit. See Figure 5.

STEP 3 - Grasp the Battery Strap and lift each Battery out. See Figure 6.



Figure 6

STEP 4 - Grasp the handlebar with one hand. With the other hand, grasp the "T" handle directly behind the seat base. See Figure 7.

STEP 5 - Lift up on the handle. Continue to lift until the Front Frame Section is clear of the Rear Drive Unit. Lifting the "T" handle both releases the latch and allows you to lift the front away from the Rear Drive Unit. See Figure 7.

STEP 6 - Fold the tiller down until it latches. The Front Frame Section may be picked up with one hand on the "T" handle and the other hand under the front bumper.



Figure 7

TO RE-ASSEMBLE THE SOLO LTD:

STEP 1 - Place the Rear Drive Unit on the ground, making sure it is tilting back and resting on the rear “anti-tip” wheels. Place the drive lever into the drive position to lock the brake and prevent the unit from rolling while attaching the front of the cart.

STEP 2 - Stand the tiller straight up and grasp the handlebar with one hand. Grasp the “T” handle with the other hand. Lift up on the “T” handle and set the Front Frame in the “V” groove on the Rear Drive Unit. Release the “T” handle and allow the front frame to drop down engaging the latch. Check to be sure the latch is engaged.



Figure 8

STEP 3 - Raise the tiller up, reconnect the battery and motor cables, and reinstall the seat.

NOTE: When reconnecting the motor cable, align the two yellow dots. See Figure 9.



Figure 9

OPERATING CONTROLS FOR DELTA TILLER

SECTION 7



Figure 10

⚠ **WARNING** ⚠

Accidentally bumping the Accelerator Lever while the key switch is on will cause the Solo XT550 to move out of control. This may result in an accident, causing serious injury or property damage. Do not turn the key switch on until you are securely seated on the Solo XT550. **ALWAYS TURN THE KEY OFF WHENEVER YOU ARE NOT DRIVING THE SOLO XT550, EVEN IF YOU ARE SITTING IN THE SEAT. ALWAYS BE SURE THE KEY IS REMOVED WHEN YOU ARE NOT SEATED ON THE SOLO XT550 TO PREVENT UNAUTHORIZED USE OR ACCIDENTAL MOVEMENT.**

1. **KEY SWITCH** - Insert the key and turn it clockwise one-quarter turn to turn on power. The Battery Level Meter will move only when the key switch is on.
2. **BATTERY LEVEL METER** - This shows how much power is left in the batteries. The batteries are charged when the needle is on the right hand side of the green area, and low when it is in the red area.
NOTE: Battery condition should be checked when the Solo XT550 is stopped. While operating, the needle will read lower.
3. **HORN** - Push button to sound horn.
4. **VARIABLE SPEED SELECTOR** - This controls the maximum speed you can travel. Rotate the knob clockwise for higher speeds and counterclockwise for lower speeds. Operate your Solo XT550 at lower speeds until you are familiar with how it handles. Always use lower settings in confined or crowded areas. Faster speeds should not be used except when traveling straight and in open areas.
NOTE: Reducing the speed setting also reduces power. If you are unable to climb a ramp, you may need to turn the knob clockwise to increase power.

⚠ **WARNING** ⚠

Operating too fast for conditions can cause the Solo XT550 to tip over. This may result in serious injury to yourself and damage to your Solo XT550. **ALWAYS REDUCE SPEED BEFORE TURNING AND WHILE OPERATING ON UNEVEN SURFACES.**

5. **ACCELERATOR LEVER** - The accelerator lever controls both your speed and direction of travel (forward or reverse). The Solo XT550 uses a “proportional” speed control system, meaning the further forward you push the Accelerator Lever the faster you will go, up to the limit you have set on the Variable Speed Control.



Figure 11

To go FORWARD, place both hands on the handlebar and use your RIGHT thumb to push the RIGHT hand side of the Accelerator Lever ahead. (See Figure 11).

To go in REVERSE, use your LEFT thumb to push the LEFT hand side of the Accelerator Lever ahead. (See Figure 12).



Figure 12

Single Handed Operation. Your Solo XT550 can be operated with only one hand if necessary. If only using the right hand, push with the thumb to go forward and pull with the index finger to go in reverse. If using the left hand push with the thumb for reverse and pull with the index finger to go forward (See figure 13 for right hand reverse example).



Figure 13

NOTE: If you must operate the Solo XT550 with your left hand only, the operation of the Accelerator Lever can be permanently reversed for easier use. Consult your Authorized ConvaQuip Dealer. THIS MODIFICATION MUST BE MADE ONLY BY AN AUTHORIZED CONVAQUIP DEALER OR THE FACTORY.

6. **POWER** - The power LED indicates that the key is in the ON position, the Circuit Breaker is not tripped and the batteries are correctly installed.
7. **LIGHT (optional)** - This switch turns the headlight and taillights on and off.

OPERATING SEQUENCE

SECTION 8

Be sure you read and understand the Safety Instructions in Section 2 before attempting to operate the Solo XT550.

1. Seat yourself securely on the Solo XT550, with the seat facing forward and locked in the forward facing position. Use the armrest to aid in lowering and raising yourself from the seat. The tiller is not designed for this purpose and it is considered misuse to use it for this purpose.
2. Be sure both armrests are down and both feet are on the floor.
3. Adjust the steering tiller to a comfortable position and be sure it is locked in place.
4. Check position of Variable Speed Control knob. Always start in a lower setting.
5. Insert the key and turn the key switch on by rotating it 90° clockwise.
6. Check the Battery Level Meter to be sure you have enough power to get where you are going.
7. Use the Accelerator Lever to go forward or reverse and to control your speed as described in Section 7.

! CAUTION !

If the Solo XT550 becomes stalled and does not move after applying full power for five seconds, release the Accelerator Lever immediately. Continuing to apply power while the Solo XT550 is not moving can cause severe damage to your electrical system.

-
8. To stop, gradually release the Accelerator Lever, The faster you release the Lever, the quicker you will stop.

! CAUTION !

Do not reverse directions while the cart is moving. Doing so will cause a very sudden stop and may cause you to lose control or tip over. It may also damage the electrical system of your Solo XT550

-
9. Turn the key switch off when you stop, and remove the key when you get off. As with many things, learning to safely operate a scooter is a skill that requires practice. Ramps, inclines, and uneven surfaces require extra caution. Make sure you are familiar with your Solo XT550 and comfortable with its operation and capabilities before attempting these things.

! WARNING !

The Solo XT550 is an electrical device. DO NOT ALLOW THE SOLO XT550 TO GET WET!

- ✓ Do not spray with water from a source such as a garden hose or a pressure washer. Take extreme care not to expose the electrical connections and components to any moisture. Cleaning should be done with a damp cloth.
- ✓ Do not leave the Solo XT550 outdoors, uncovered, where moisture may contact it.
- ✓ Do not transport the Solo XT550 on the outside of the motor vehicle (such as an open pickup bed, trailer, or outside mounted scooter lift) without an adequate cover to protect it from moisture.

If the controller does become wet, do not operate the Solo XT550 for at least 24 hours or until it has had adequate time for the unit to dry thoroughly. Operating the Solo XT550 or energizing its electrical components while wet can damage the components and create hazardous operation conditions.

BRAKE SYSTEMS

SECTION 9

Your Solo XT550 uses two systems for braking, both of which are designed for automatic operation. When you release the Accelerator Lever, the DYNAMIC BRAKE quickly and safely brings you to a stop. After you are stopped the PARKING BRAKE automatically comes on to keep the Solo XT550 from rolling. The PARKING BRAKE also helps to stop you when operating on a ramp or incline.

The PARKING BRAKE is engaged by spring pressure. It is automatically released by an electromagnet whenever you move the Accelerator Lever. In the event of a malfunction which causes a loss of power, the PARKING BRAKE will automatically engage. A MANUAL RELEASE LEVER is provided which will release the brake and allow the Solo XT550 to be pushed. Simply pull up on the lever (fig 14) to release the brake. Push down to operate the Solo XT550.



Figure 14

When the MANUAL RELEASE LEVER is in the “released” position, a safety interlock switch prevents the Solo XT550 from being driven. Do not leave the brake lever in the “released” position when the Solo XT550 is unattended. A small amount of current is required to power the interlock relay (**even with the key switch off**) which could eventually drain the batteries.

⚠ WARNING ⚠

Never attempt to operate the Solo XT550 with the MANUAL RELEASE LEVER in the “released” position. If the safety interlock is not functioning, you will be driving the Solo XT550 with no PARKING BRAKE. This could result in an accident if operating on a ramp or incline, causing serious injury and damage to property. Always be sure the manual release lever is in the “drive” position before operating the Solo XT550.

BATTERIES

SECTION 10

The Solo XT550 is powered by two 12 volt “Deep Cycle” batteries (group 27 U-1 Gel). ConvaQuip Ind., Inc. strongly recommends the use of gel cell batteries. Gel batteries are sealed and do not require any water to be added. They are also safer and more convenient to handle since they are sealed and not subject to spilling.

⚠ WARNING ⚠

IF YOU DECIDE TO USE UNSEALED LEAD-ACID TYPE BATTERIES, EXTREME CARE MUST BE EXERCISED TO ENSURE THAT THEY DO NOT LEAK OR SPILL. BATTERY ACID CAN CAUSE SERIOUS DAMAGE TO YOUR SOLO XT550 AND TO SURFACES IN YOUR HOME OR CAR THAT COMES IN CONTACT WITH ACID. ALWAYS WEAR PROPER PROTECTIVE CLOTHING WHEN HANDLING UNSEALED LEAD ACID BATTERIES. REFER TO INSTRUCTION ON THE BATTERIES FOR FURTHER INFORMATION.

Use care when connecting or disconnecting wires from the battery terminals. Be sure that the tools you are using do not accidentally drop, or other wise touch both terminals together.

Severe electric shock, fire, or explosion can result from tools shorting across the terminals.

Never wear rings, watches or other jewelry while working on or around batteries as serious injury can occur if an object shorts across the battery terminals.

BATTERY CHARGING

SECTION 11

To charge gel-cell batteries in the Solo XT550 with the charger:

1. Connect the charger plug to the port on the right side of the accelerator control box located at the top of the steering tiller. Then connect the charger plug to a properly grounded 115 VAC outlet. (See Figure 15)

⚠ WARNING ⚠

The charger for your Solo XT550 must be connected to a properly grounded 115 VAC outlet. If it is absolutely necessary to use an extension cord, use a 3-prong (grounded) 14 gauge or heavier extension cord. **FAILURE TO OBSERVE THIS WARNING MAY RESULT IN FIRE OR ELECTRICAL SHOCK.**



Figure 15

NOTE: Your Solo XT550 is equipped with a safety mechanism called a “Battery Charger Interlock.”

This prevents the cart from being driven with the charger plugged in.

2. Charging time may vary from under ½ hour to up to 18 hours for severely discharged batteries. Normally an overnight charge will suffice.
3. The charger has an automatic shut off. If the charge of the batteries is unknown check it by unplugging the charger and turning the key on. This will give a reading on the BATTERY LEVEL METER located on the ACCELERATOR CONTROL PANEL. The batteries are fully charged when the needle is all the way to the right in the green area of the meter. Do not check the meter with the charger plugged in as it will give a false reading. If after charging, the batteries will not take a charge as shown by the BATTERY LEVEL METER or one or both batteries get warm during charging it could mean that you need a new battery. Call your dealer.
4. When the batteries are fully charged disconnect the charger from the 115 VAC outlet.

WHEN SHOULD I CHARGE MY SOLO XT550?

DAILY USER:

Charge daily. This applies to any one who actually uses his or her equipment for community mobility outside the home

OCCASIONAL USERS:

Always be sure to charge before an outing and always after active use. The ideal recharge point is about 50% on the battery level meter.

STORING BATTERIES:

Store batteries FULLY CHARGED. Check them once a month and recharge as needed. And remember, if storing your scooter for longer than a couple of weeks, it is best to charge the batteries and then disconnect them.

- ✓ Use only the charger that came with your Solo XT550.
- ✓ Do not use automotive or wet-type chargers on gel/sealed batteries. They will ruin your batteries quickly.
- ✓ Never run your batteries completely flat.
- ✓ Do not “top off” with frequent charges.
- ✓ Do not store batteries in temperatures below 32°F

⚠ WARNING ⚠

Do not expose any battery charger to moisture. Do not connect the charger while standing in water or on a wet floor. Use the charger on a hard flat surface only. Do not place it on the seat of the Solo XT550. Do not restrict airflow around the charger. **FAILURE TO FOLLOW THIS WARNING MAY RESULT IN FIRE OR ELECTRICAL SHOCK.** Read and follow instructions in the charger owners guide.

INSTRUCTIONS FOR GEL-CELL BATTERIES WITH YOUR CHARGER:

To charge the batteries on your Solo XT550 begin by connecting the power cord to the charger. Then plug the charger cord into the right side of the accelerator control box. Now plug the charger into a 115 volt wall outlet. Turn the charger on and look at the indicator lights on the end opposite the power switch. The red light should be on indicating power is on. The other light will be orange when the unit is charging and will turn green when charging is complete. Always place the charger on a hard flat surface with plenty of air space around it, do not place the charger on the seat of the vehicle.

INSTRUCTIONS FOR LEAD-ACID BATTERIES

If you have decided to use lead-acid batteries instead of gel-cell it is of utmost importance that you read and follow the instructions in the “personal precautions” section of the charger owners guide, and on the batteries. **FAILURE TO FOLLOW THESE PRECAUTIONS COULD RESULT IN SERIOUS BODILY INJURY OR DAMAGE TO PROPERTY.**

⚠ WARNING ⚠

RISK OF EXPLOSIVE GASSES FROM LEAD-ACID BATTERIES. WORKING IN THE VICINITY OF LEAD-ACID BATTERIES IS DANGEROUS. Batteries generate explosive gasses during normal operation.

- ✓ Do not smoke near the charger.
- ✓ Do not operate charger near an ignition source or in a non-ventilated area.

ROUTINE MAINTENANCE

SECTION 12

DAILY:

1. Charge Batteries as needed. Batteries should generally be charged daily. Unplug the charger from both the Solo XT550 and the 115 volt outlet each morning. Do not leave the charger plugged into the Solo XT550 when it is not operating because there is always a small current drain for the charger interlock relay.

MONTHLY:

1. Check tire pressure and tread wear. Maintain 45 lbs. in front tires and 45 lbs. in the rear tires.
-

⚠ WARNING ⚠

Air pressure inside the tire can cause an explosion if the bolts holding the wheel halves together are removed before releasing all pressure from inside the tire. THIS COULD RESULT IN SEVERE BODILY INJURY OR PROPERTY DAMAGE. Do not attempt to disassemble a wheel until all the air has been released from the tire.

2. Check and tighten all nuts and bolts.
3. Parking Brake: Be sure the brake will hold you when parked on an incline. If it will not, it must be replaced. Consult your ConvaQuip dealer.
4. Inspect all electrical connections for damage and corrosion.

ANNUALLY:

It is recommended that your ConvaQuip dealer perform an annual inspection of your Solo XT550. Many times he or she may be able to prevent problems before they happen, saving time and inconvenience.

GENERAL INFORMATION:

Cleaning: The body covers on your Solo XT550 are made from a high grade ABS plastic. Use only a mild soap and water for cleaning. Do not use any petroleum based solvents since they can damage the finish. Clean the vinyl seat cushion with a mild soap and water. The optional cloth seat cushion should be vacuumed or brushed as needed and cleaned by a furniture cleaning service when necessary.

⚠ CAUTION ⚠

The Solo XT550 is an electrical device. Do not spray with water from a source such as a garden hose or a pressure washer. Take extreme care not to expose the electrical connections and components to any moisture. Cleaning should be done with a damp cloth. Operating the Solo XT550 or energizing its electrical components while wet can damage the components and create hazardous operating conditions. Avoid leaving the Solo XT550 out, uncovered, in the rain. IF the controller does become wet, DO NOT operate the Solo XT550 for at least 24 hours or until it has had time for the unit to dry thoroughly.

SECTION 13

If your Solo XT550 will not operate, please check the following items before calling your dealer:

1. Be sure the key switch is turned on. The battery meter needle should move when the key switch is turned on.
2. Be sure the battery charger is unplugged. The Solo XT550 will not operate when the battery charger is plugged in.
3. Be sure the Brake Release Lever is in the "Drive" position (down).
4. Be sure that the circuit breaker (located on the lid of the left battery box) is pushed in. If the circuit breaker continues to trip call your ConvaQuip dealer.
5. Check to be sure that all electrical connectors are properly connected and latched. Inspect connectors for corrosion or breakage.
6. Be sure the batteries are fully charged.

If these measures do not correct the problem, or if you are experiencing any other problems, please contact your ConvaQuip dealer.

The SOLO XT550 controller is equipped with an error code indicator. If the controller detects an error, the power LED located on the accelerator box, which is located on the steering tiller will flash. If the power LED flashes it will flash a series of times, have a short pause followed by a series of flashes and a long pause and then start over again. If this occurs, please call your dealer or authorized service center.

SPECIFICATIONS - SOLO XT550

SECTION 14

SOLO XT-550 - 4 WHEEL

Overall Length	48"
Overall Width	24"
Weight of Rear Drive Unit	42 lb.
Total Weight (less batteries)	122 lb.
Shipping Weight	148 lb.
Maximum Speed	5 mph forward 3 mph reverse
Distance Per Charge	up to 15 miles
Ground Clearance	4"
Turning Radius:	inside front tire 33"
Tire Size: front (gray pneumatic)	9"
rear (gray pneumatic)	10"
Maximum Weight of Operator	550 lb.
Seat Height: Manual Adjustment**	15"-16"-17"-18"
Maximum Incline	6°
Seat Dimensions	16" d x 18" w x 16" h
Seat Type	Deluxe Folding Seat With Flip-Up Armrests

**Measured from floorboard. Add 5-1/2" to ground

NOTE: ConvaQuip Ind., Inc. reserves the right to change specifications without notice.

SECTION 15

CAUTION: IT IS VERY IMPORTANT THAT YOU READ THIS INFORMATION REGARDING THE POSSIBLE EFFECTS OF ELECTROMAGNETIC INTERFERENCE ON YOUR POWERED WHEELCHAIR.

Electromagnetic Interference (EMI) From Wave Sources

Powered wheelchairs and motorized scooters (in this text, both will be referred to as powered wheelchairs) may be susceptible to electromagnetic interference (EMI), which is interference from

electromagnetic energy (EM) emitted from sources such as radio stations, TV stations, amateur radio (HAM) transmitters, two-way radios and cellular phones. The interference (from radio wave sources) can cause the powered wheelchair to release its brakes, move by itself, or move in unintended directions. It can also permanently damage the powered wheelchair's control system. The intensity of the interfering EMI energy can be measured in volts per meter (v/m). Each powered wheelchair can resist EMI up to a certain intensity. This is called its "immunity level." The higher the immunity level, the greater the protection. At this time, current technology is capable of achieving at least a 20 v/m immunity level, which would provide useful protection from the more common sources of radiated EMI.

There are a number of sources of relatively intense electromagnetic fields in the everyday environment. Some of these sources are obvious and easy to avoid. Others are not apparent and exposure is unavoidable. However, we believe that by following the warnings listed below, your risk to EMI will be minimized.

The source of radiated EMI can be broadly classified into three types:

- 1) Hand-held portable transceivers** (transmitters-receivers) with the antenna mounted directly on the transmitting unit. Example include: citizens band (CB) radios, "walkie talkie," security, fire, and police transceivers, cellular telephones, and other personal communication devices transmit signals while they are ON, even while not being used.
- 2) Medium-range mobile transceivers**, such as those used in police cars, fire trucks, ambulances, and taxis. These usually have the antenna mounted on the outside of the vehicle.
- 3) Long-range transmitters and transceivers**, such as commercial broadcasts transmitters (radio and TV broadcast antenna towers) and amateur (HAM) radios.

NOTE: Other types of hand-held devices, such as cordless phones, laptop computers, AM/FM radios, TV sets, CD players, and cassette players, and small appliances, such as electric shavers and hair dryers, so far as we know, are not likely to cause EMI problems to your powered wheelchair.

Powered Wheelchair Electromagnetic Interference (EMI)

Because EM energy rapidly becomes more intense as one moves closer to the transmitting antenna (source), the EM fields from hand-held radio wave sources (transceivers are of special concern). It is possible to unintentionally bring high levels of EM energy very close to the powered wheelchair's control system while using these devices. This can affect powered wheelchair movement and braking. Therefore, the warnings listed below are recommended to prevent possible interference with the control system of the powered wheelchair.

WARNINGS

Electromagnetic interference (EMI) from sources such as radio and TV stations, amateur radio (HAM) transmitters, two-way radios, and cellular phones can affect powered wheelchairs and motorized scooters. Following the warnings listed below should reduce the chance of unintended brake release or powered wheelchair movement which could result in serious injury.

- 1) Do not operate hand-held transceivers (transmitters-receivers), such as citizens band (CB) radios, or turn ON personal communications devices, such as cellular phones, while the powered wheelchair is turned ON.
- 2) Be aware of nearby transmitters, such as radio or TV stations, and try to avoid coming close to them.
- 3) If unintended movement of brake release occurs, turn the powered wheelchair OFF as soon as it is safe.
- 4) Be aware that adding accessories or components, or modifying the powered wheelchair may make it more susceptible to EMI (Note: there is no easy way to evaluate their effect on the overall immunity of the powered wheelchair).
- 5) Report all incidents of unintended movement or brake release to the powered wheelchair manufacturer, and note whether there is a source of EMI nearby.

Important Information

- 1) 20 volts per meter (v/m) is a generally achievable and useful immunity level against EMI (as of May 1994)(the higher the level, the greater the protection).
- 2) This powered wheelchair has not been tested and its immunity is not known.

CALIFORNIA PROPOSITION 65 WARNINGS

SECTION 16

⚠ WARNING ⚠

This product contains or emits chemicals known to the State of California to cause cancer and birth defects or other reproductive harm.

⚠ WARNING ⚠

Battery posts, terminals and related accessories contain lead and lead compounds, chemicals known to the state of California to cause cancer and birth defects or other reproductive harm. WASH HANDS AFTER HANDLING!

LIMITED WARRANTY

ConvaQuip Ind., Inc.

SECTION 17

WARRANTY

ConvaQuip Ind., Inc. warrants to the original retail purchaser for those periods set forth below that all new products shall be free from failure caused by defects in material and workmanship when used under normal conditions in a normal manner. The obligation of the company under this warranty consists only of repairing or replacing, at the company's option, any part which is proven to be defective in material or factory workmanship.

The company reserves the right to require the return of defective material to verify the claim.

All costs, such as labor, transportation, and loss of use, associated with the replacement of defective parts and components are not covered under this warranty.

TERMS OF WARRANTY

The product is warranted for a period of twelve (12) months from date of purchase by original user. If used commercially, the warranty is ninety (90) days from date of purchase by the original purchaser. If the product is rented or otherwise not sold, the warranty period begins on the date of invoice to the dealer.

Repair parts are warranted for a period of ninety (90) days from date of purchase.

Replacement parts used in warranty repairs are warranted for a period of ninety (90) days or the balance of the warranty period, whichever is longer.

The following parts are warranted for three (3) years: Front Frame (P/N 073772), and Rear Frame (P/N 073799).

Transaxle drive models, the transaxle only, P/N 656269 (not the motor or the brake) is warranted as follows:

1st year: We pay 100% of replacement parts cost. You pay nothing.

2nd year: We pay 67% of replacement parts cost. You pay 33%.

3rd year: We pay 50% of replacement parts cost. You pay 50%.

The motor and brake are warranted for a period of one year. The warranty excludes claims due to an increase in operational noise level.

ITEMS NOT COVERED BY THE WARRANTY

Tires and batteries are not covered by this warranty. These items are covered by their respective manufacturers.

CONDITIONS WHICH WILL VOID THE WARRANTY

This warranty will be void if the product has been subjected to negligence, abuse, misuse, accidental damage, improper operation, improper maintenance, or improper storage. The warranty is also void if damage is due to unauthorized modifications or alterations.

DISCLAIMER

THIS WARRANTY IS MADE IN LIEU OF ALL OTHER WARRANTIES, IMPLIED OR EXPRESSED, INCLUDING ANY WARRANTY OR MERCHANTABILITY OR FITNESS FOR A PARTICULAR PURPOSE. CONVAQUIP IND., INC. FURTHER DISCLAIMS LIABILITY FOR INCIDENTAL OR CONSEQUENTIAL DAMAGES TO INCLUDE BUT NOT LIMITED TO, PERSONAL INJURY OR PROPERTY DAMAGE ARISING FROM ANY DEFECT IN THE PRODUCT.

Some states do not permit limitations on how long an implied warranty lasts or the exclusion or limitation of incidental or consequential damages, so the above limitations may not apply to you.

This warranty gives you specific legal rights, you may also have other rights which vary from state to state.

No dealer has any authority to make any representations or modifications of behalf of the company, or to modify in any way the terms of limitations of the warranty.